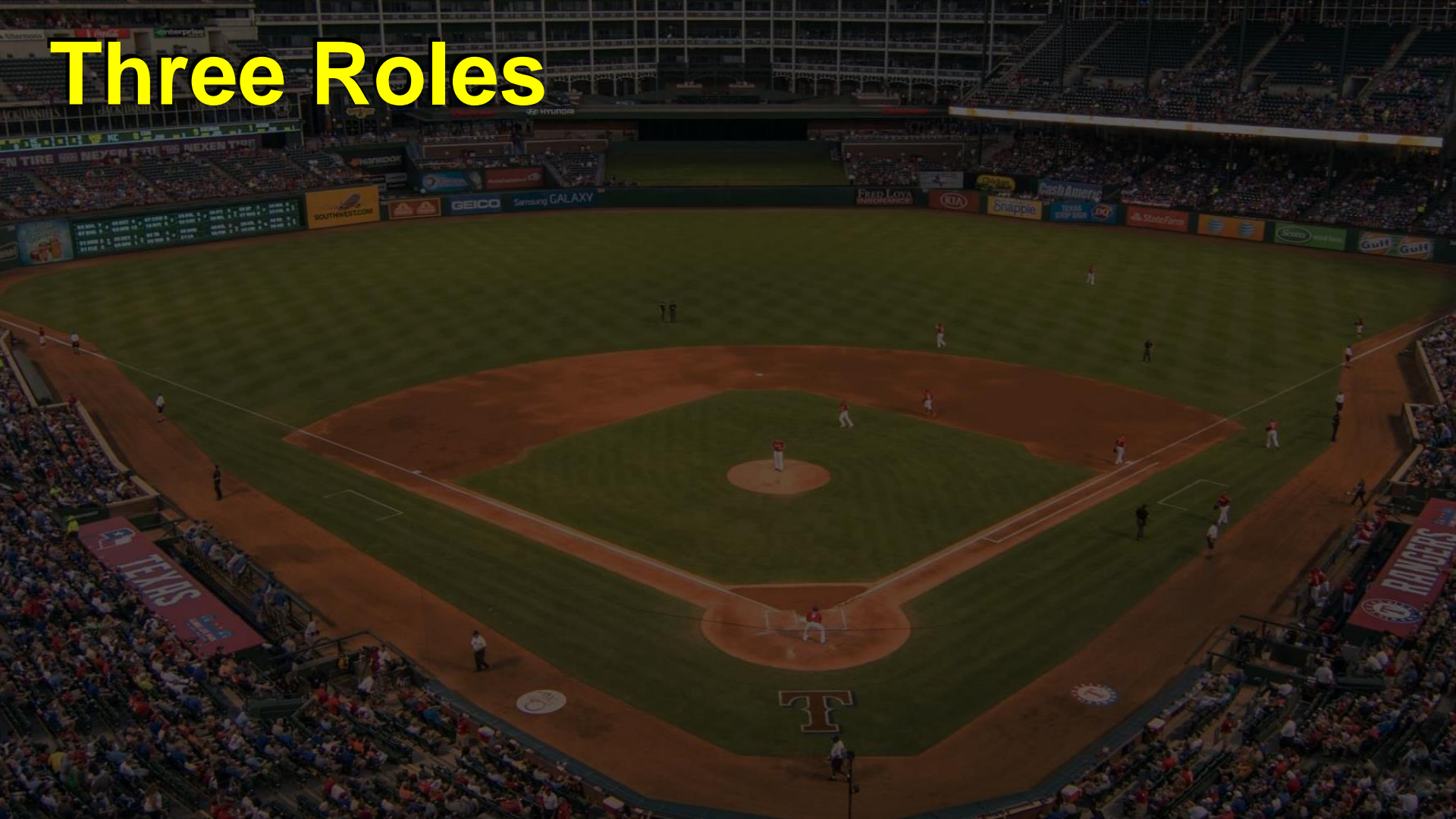


An aerial view of a baseball stadium during a game. The field is green with brown dirt base paths. A large 'T' logo is visible on the grass near home plate. The stands are filled with spectators. Various advertisements are visible on the outfield fence, including 'Jack Daniel's', 'Hyundai', 'Galaxy', 'Gulf', and 'PNC'. The text 'TEXAS' is visible on the left side of the stands.

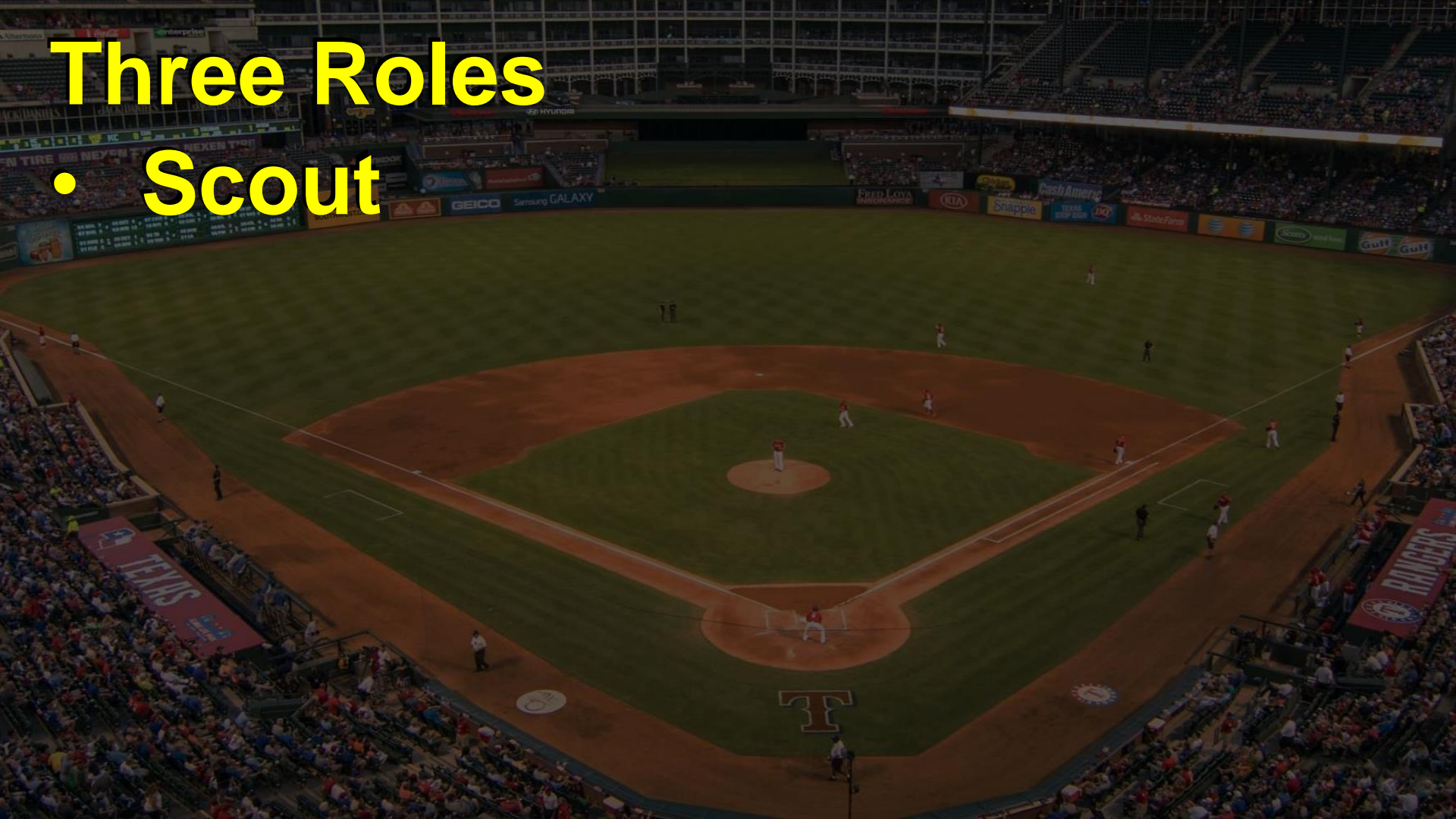
Church Leader Tool: “Fielding” Your Church Leadership Team

Three Roles



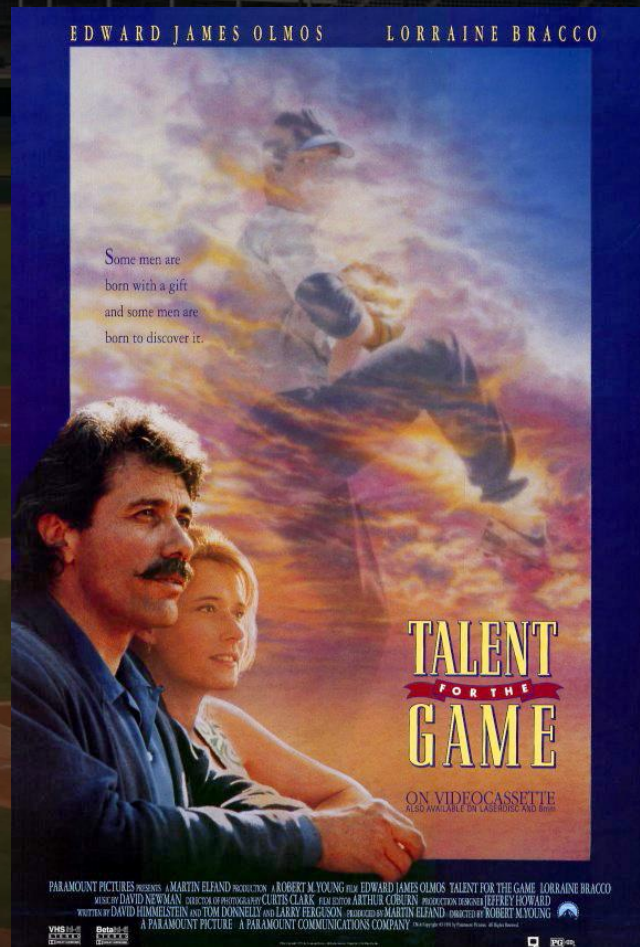
Three Roles

- Scout



Three Roles

- Scout

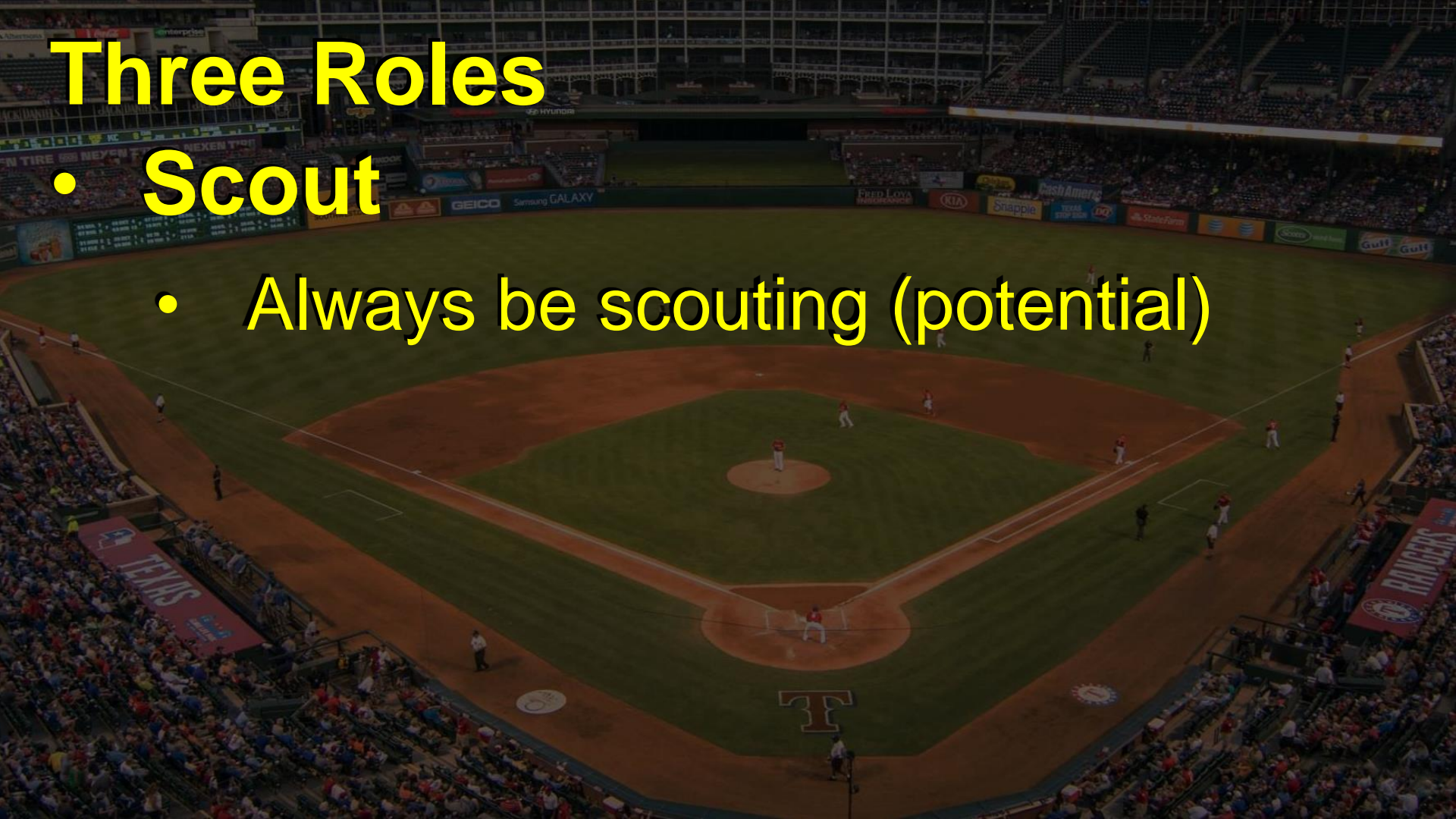




Three Roles

- Scout

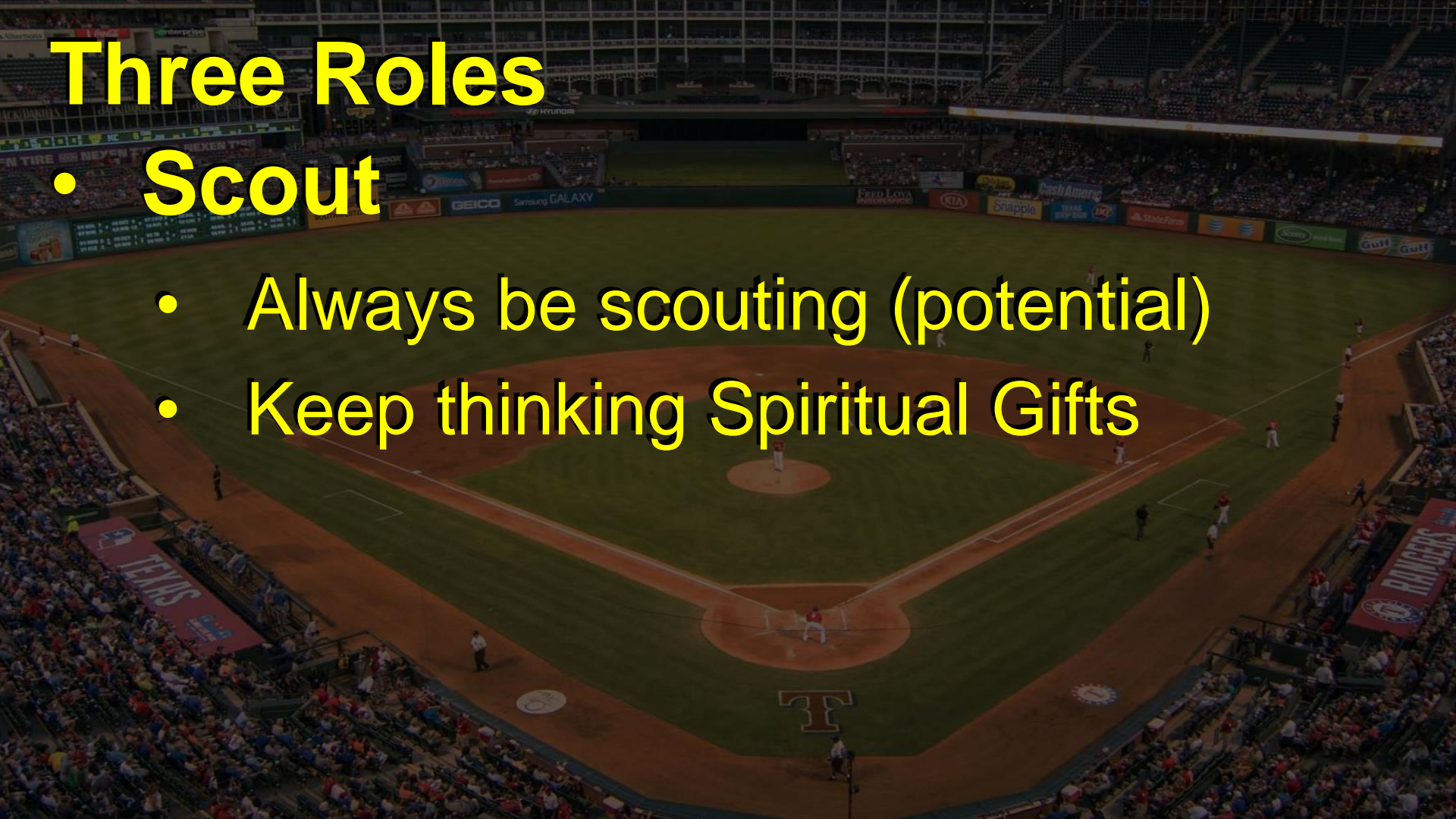
- Always be scouting (potential)



Three Roles

- Scout

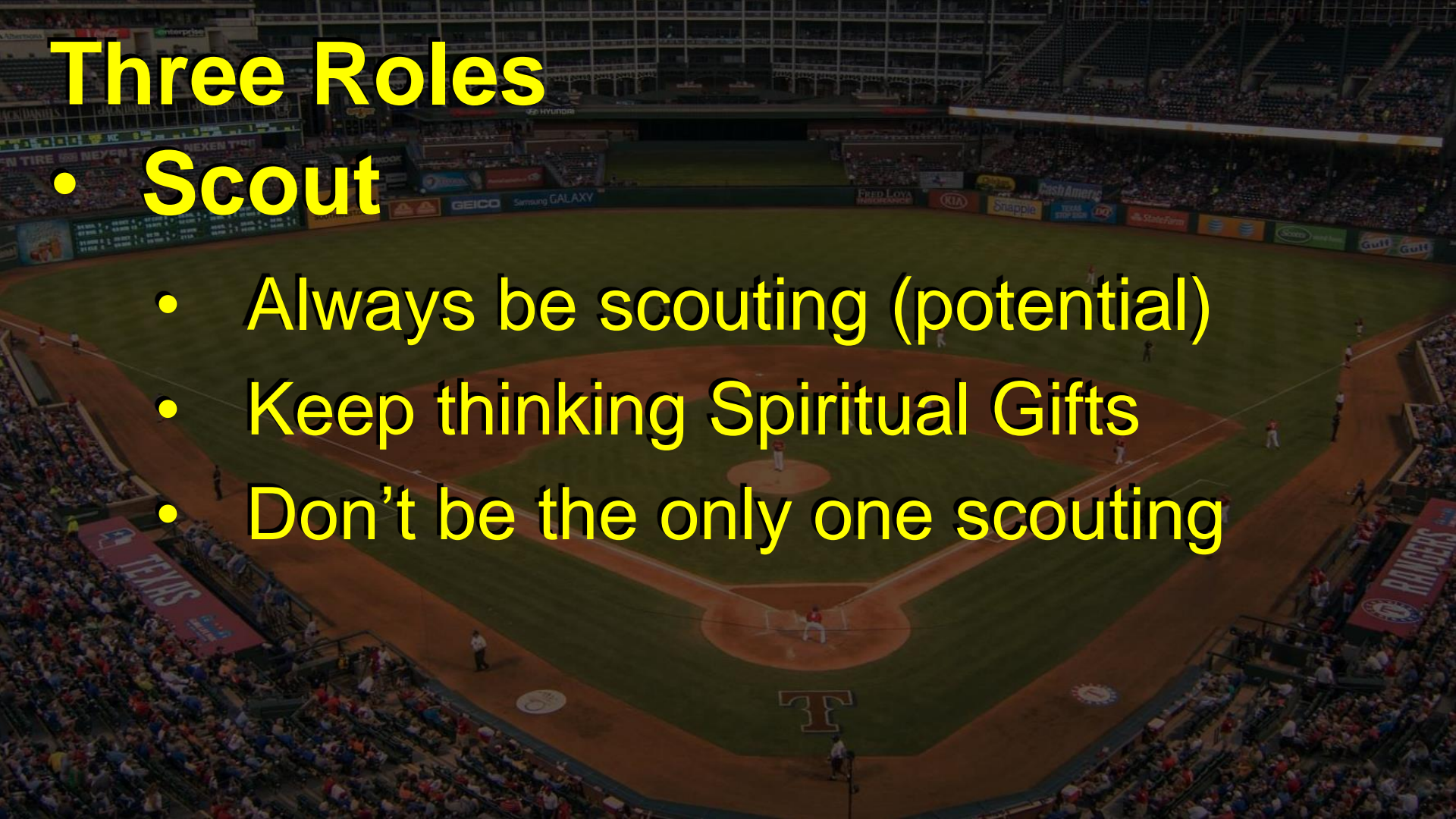
- Always be scouting (potential)
- Keep thinking Spiritual Gifts



Three Roles

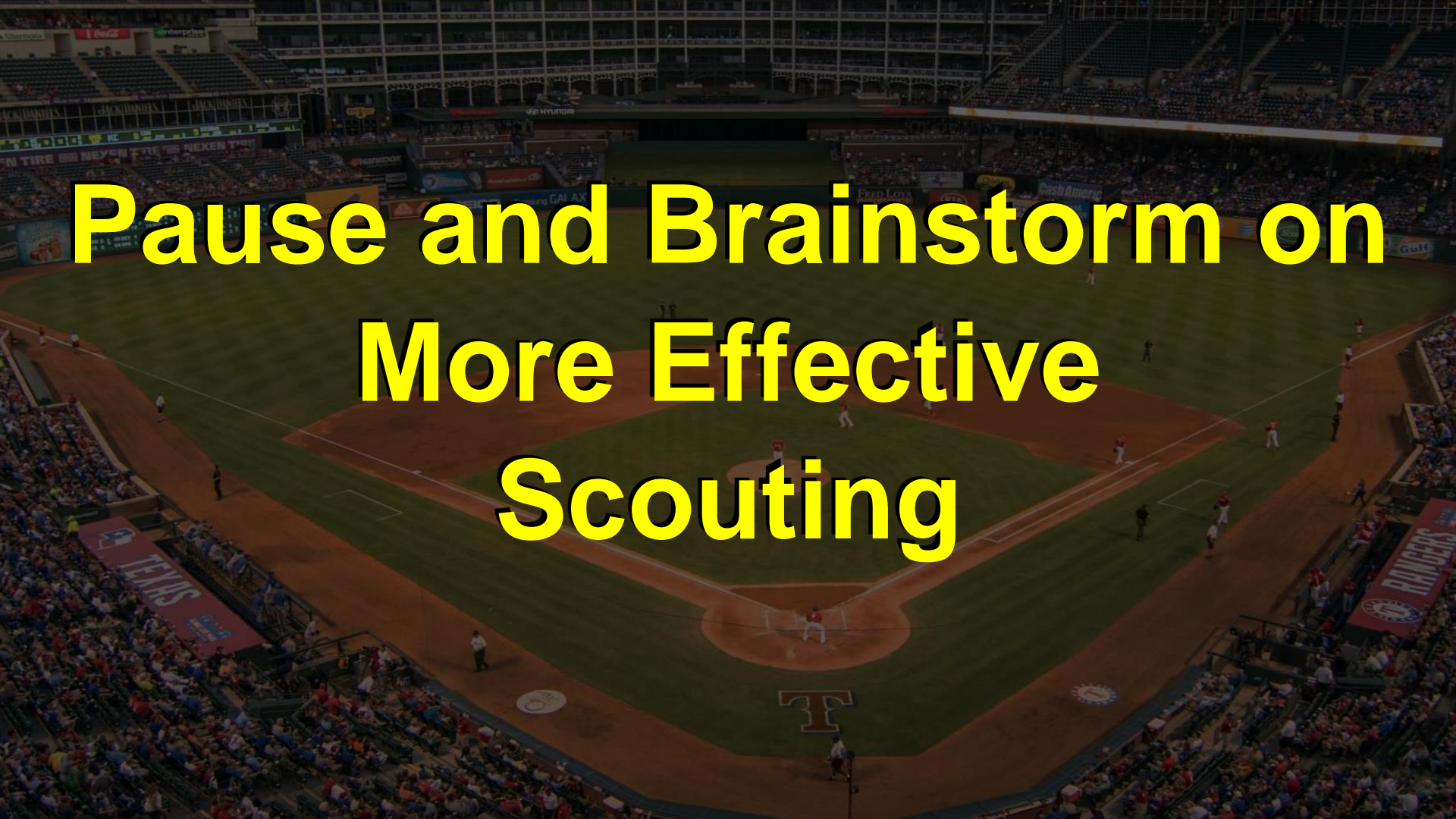
- **Scout**

- Always be scouting (potential)
- Keep thinking Spiritual Gifts
- Don't be the only one scouting



Scouting Suggestions:

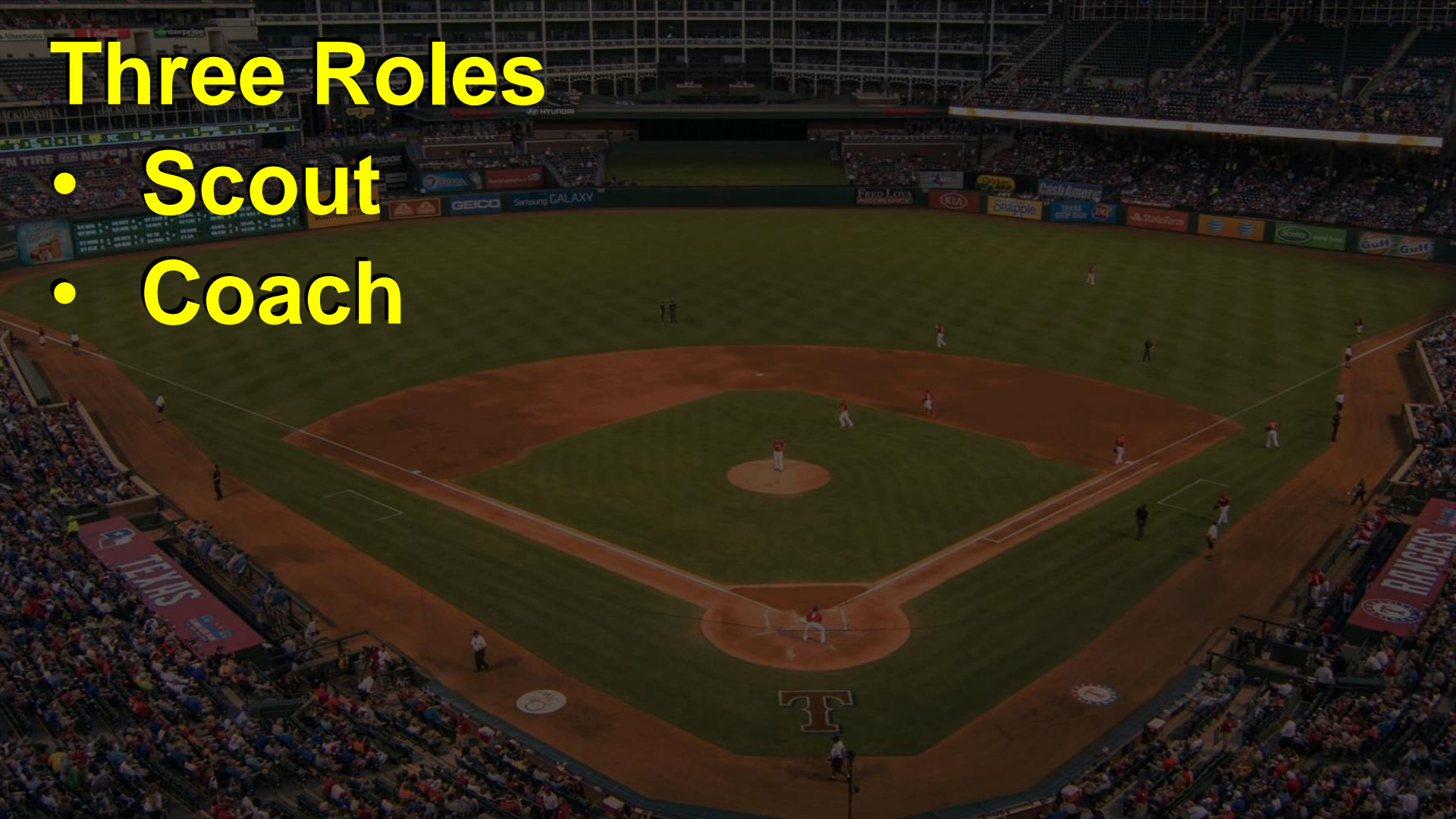
- Use a Time & Talent Survey or a Spiritual Gifts Inventory
- Note people's jobs, volunteer activities and passions
- Create opportunities to serve in worship
- Develop a quarterly invitation process



Pause and Brainstorm on More Effective Scouting

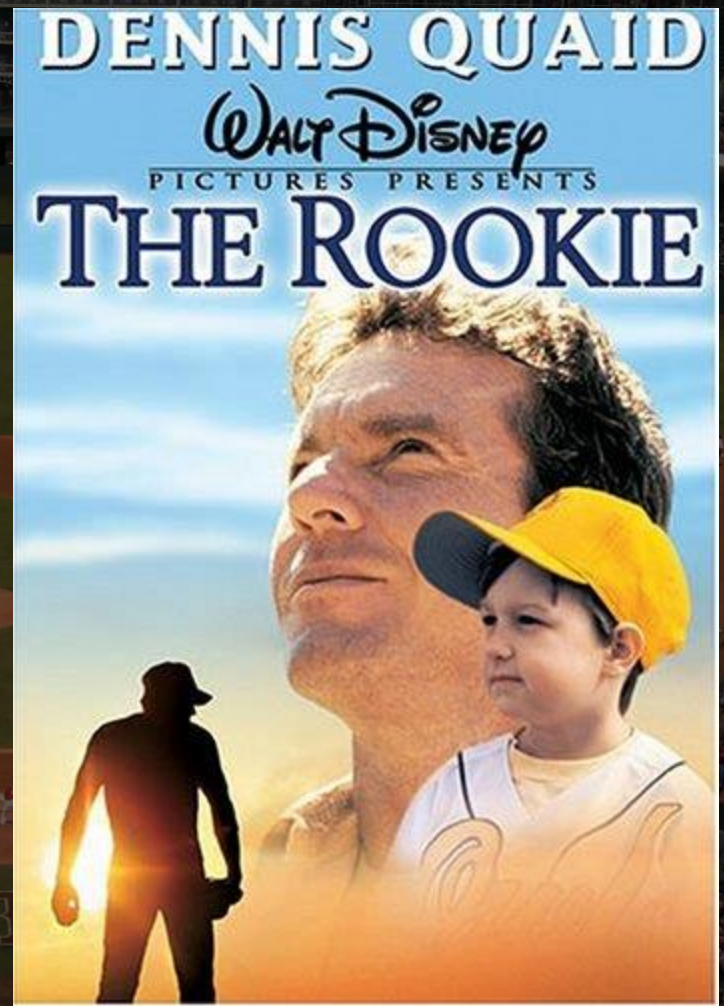
Three Roles

- Scout
- Coach



Three Roles

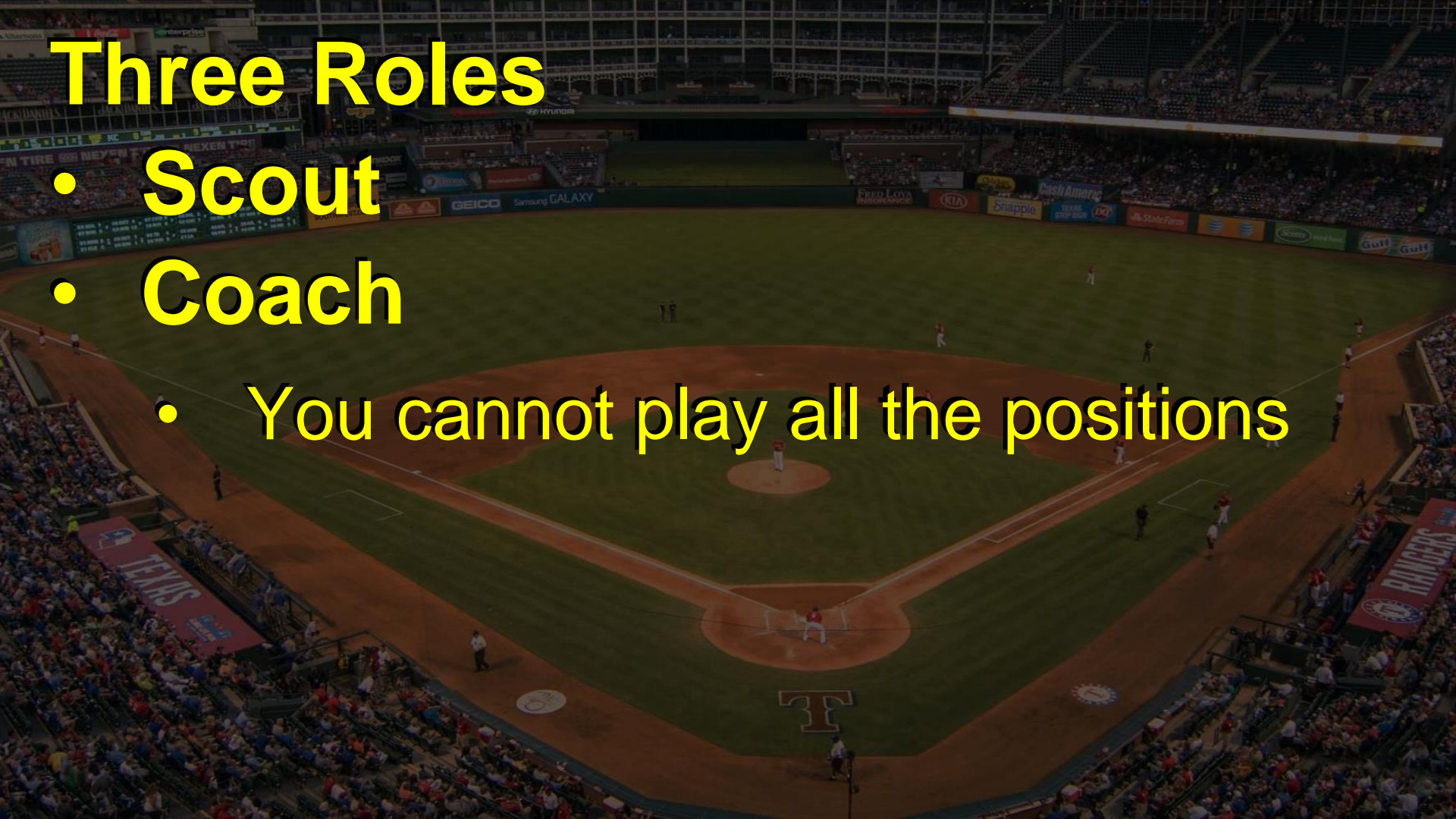
- Scout
- Coach





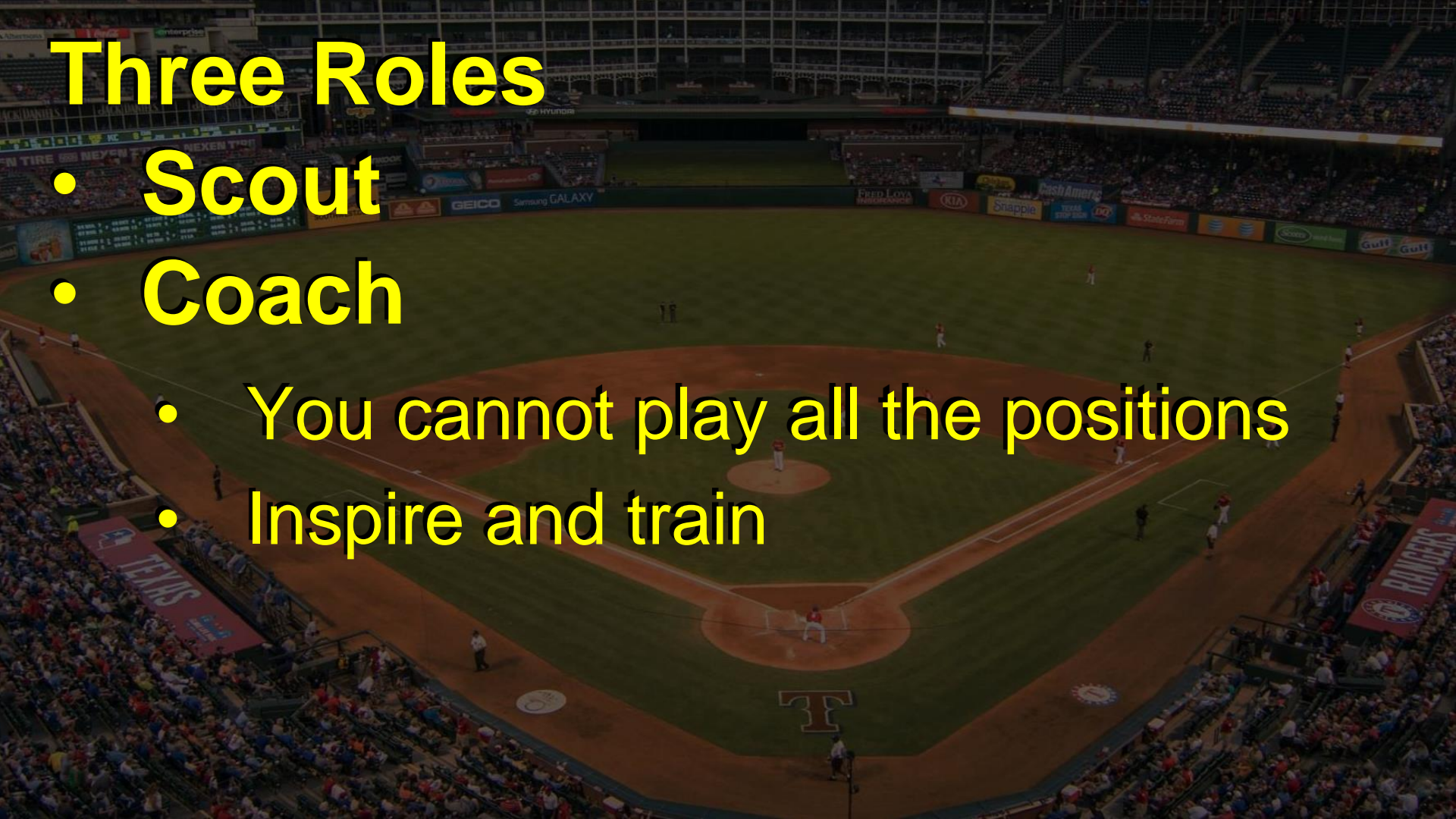
Three Roles

- Scout
- Coach
 - You cannot play all the positions



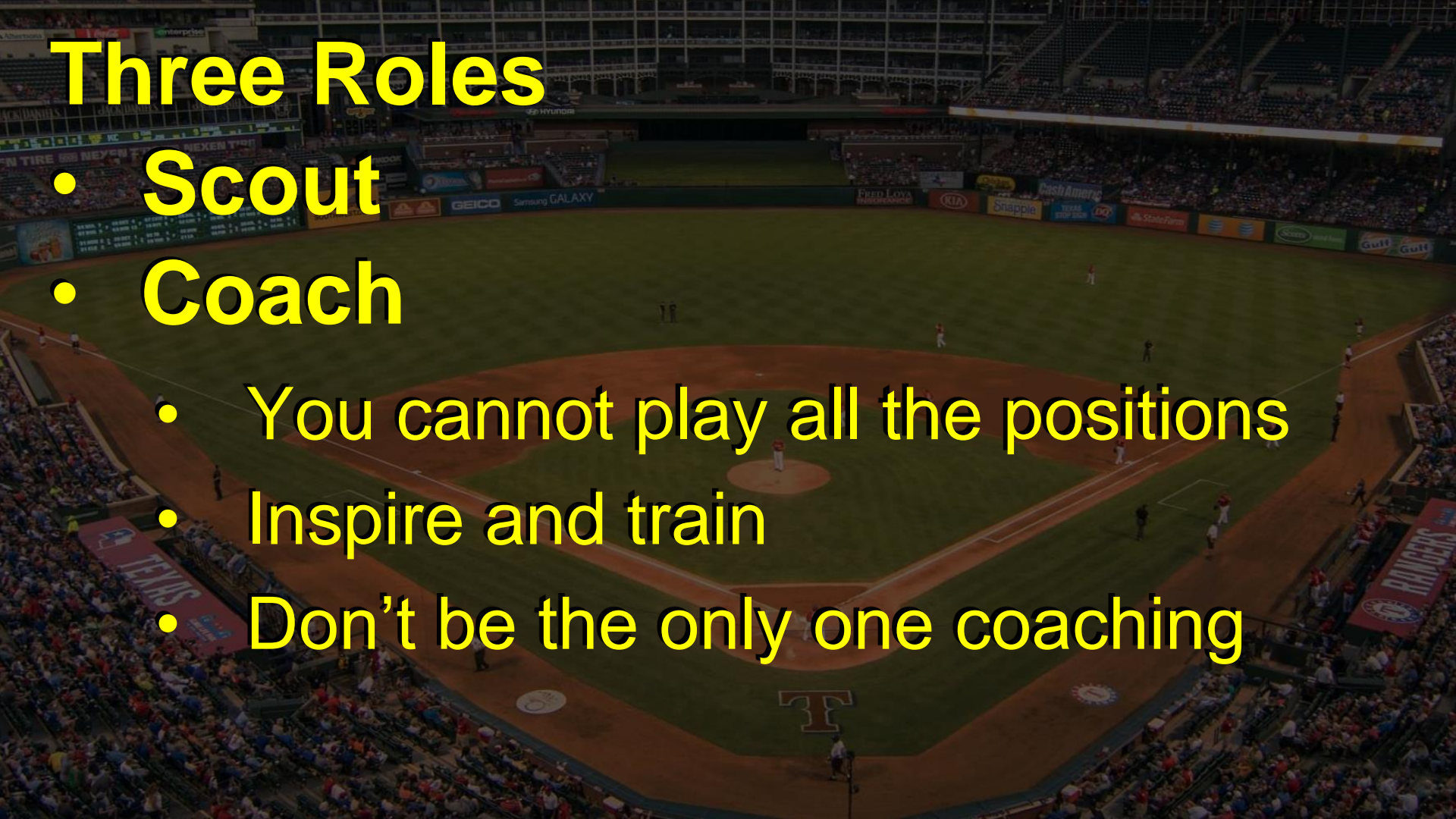
Three Roles

- Scout
- Coach
 - You cannot play all the positions
 - Inspire and train



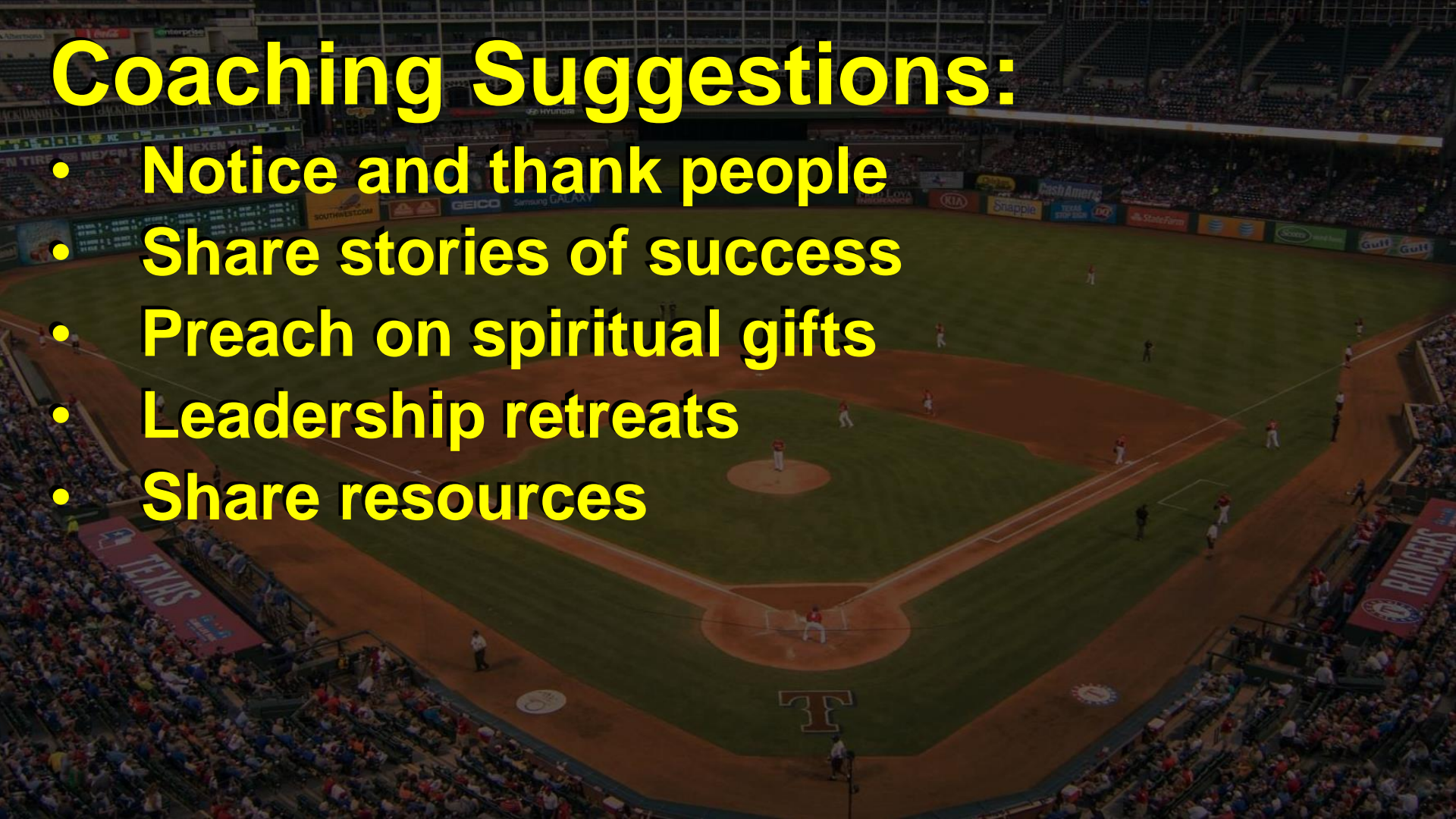
Three Roles

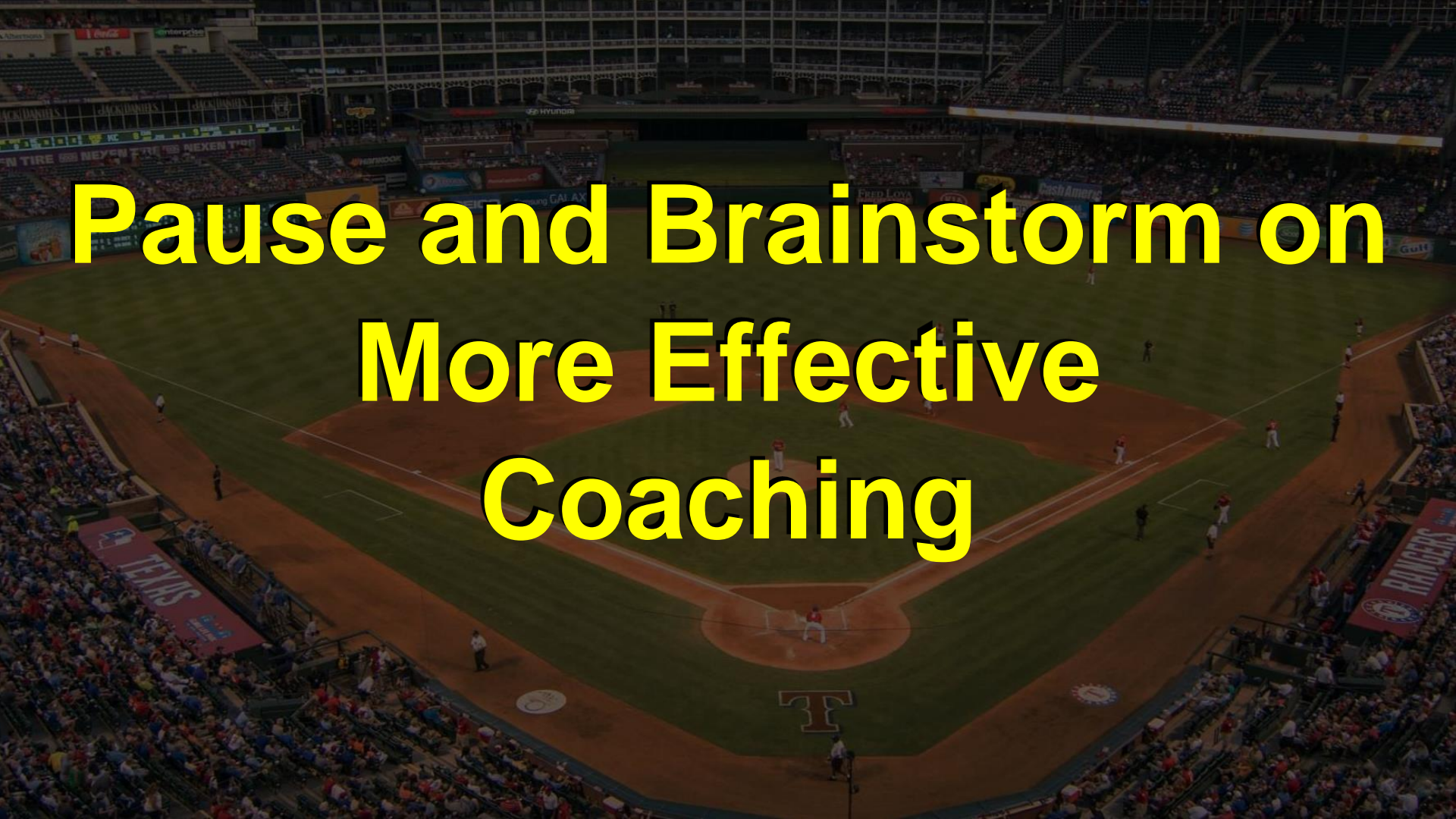
- Scout
- Coach
 - You cannot play all the positions
 - Inspire and train
 - Don't be the only one coaching



Coaching Suggestions:

- Notice and thank people
- Share stories of success
- Preach on spiritual gifts
- Leadership retreats
- Share resources

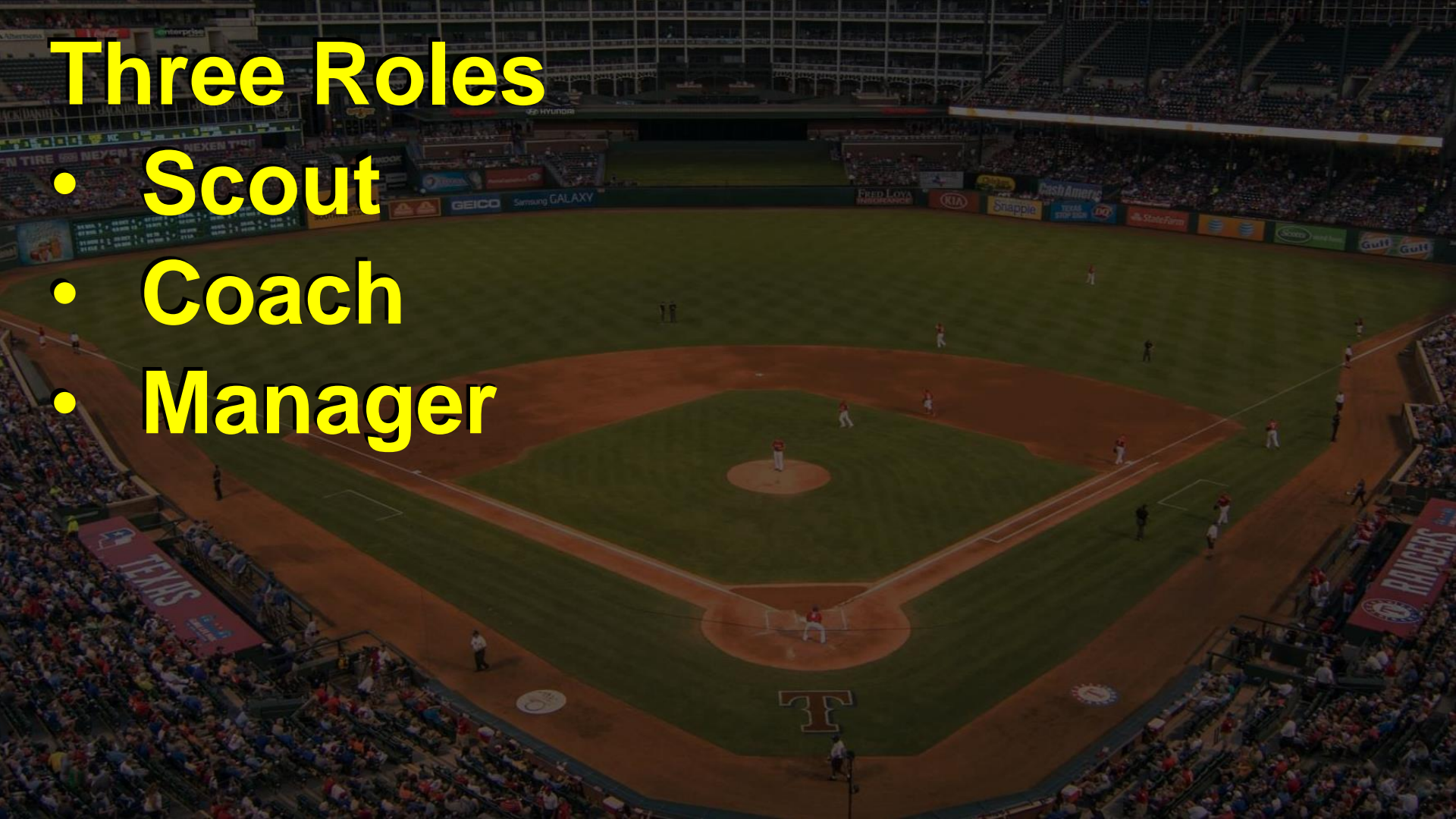


An aerial view of a baseball stadium during a game. The field is green with brown dirt base paths. A large 'T' logo is visible on the grass near home plate. The stands are filled with spectators. The text 'Pause and Brainstorm on More Effective Coaching' is overlaid in large yellow letters.

Pause and Brainstorm on More Effective Coaching

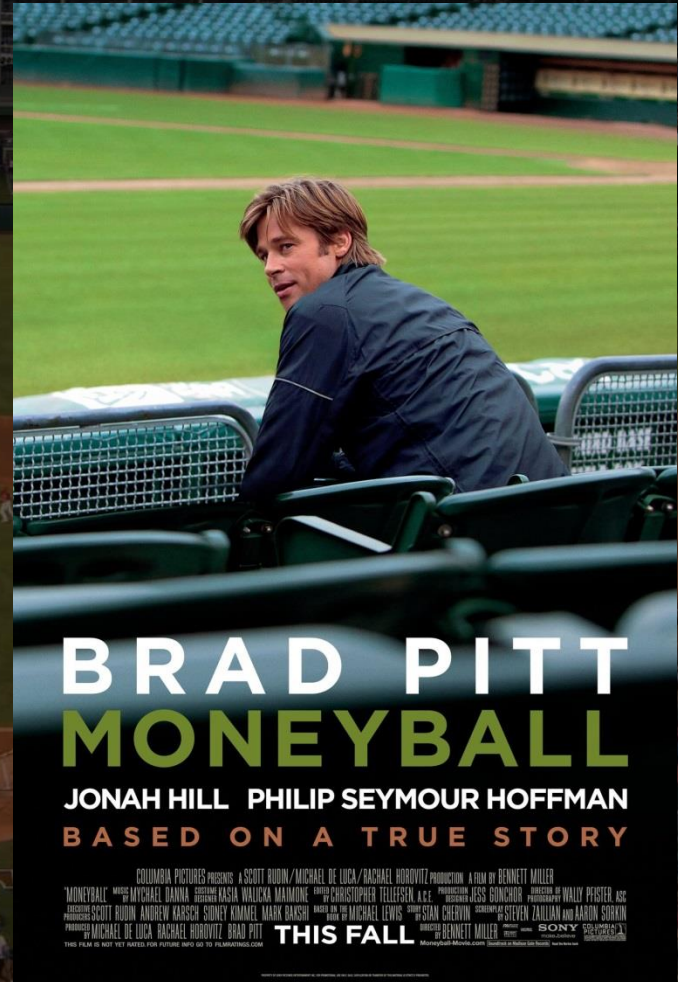
Three Roles

- Scout
- Coach
- Manager



Three Roles

- Scout
- Coach
- Manager

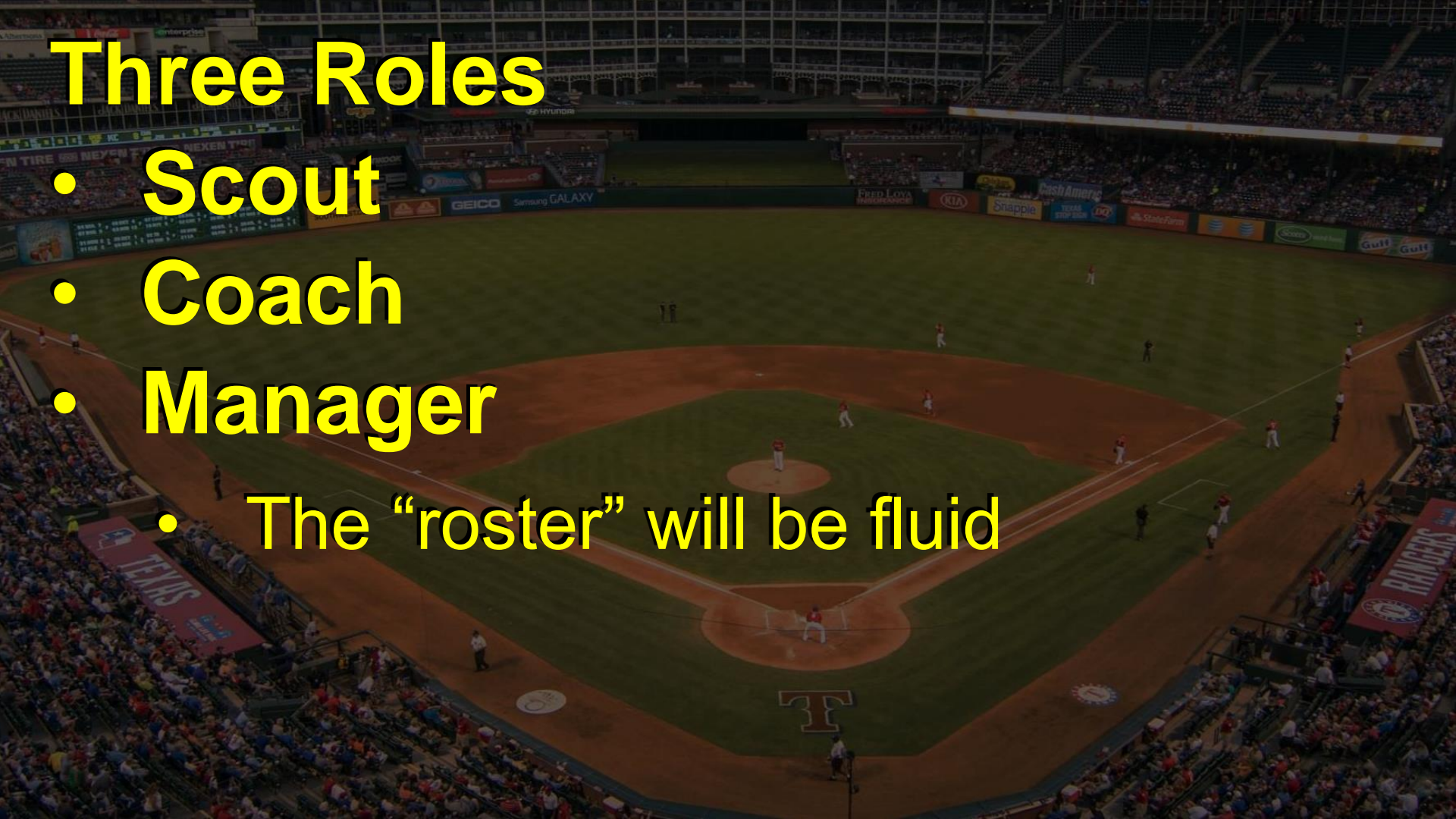




FXM

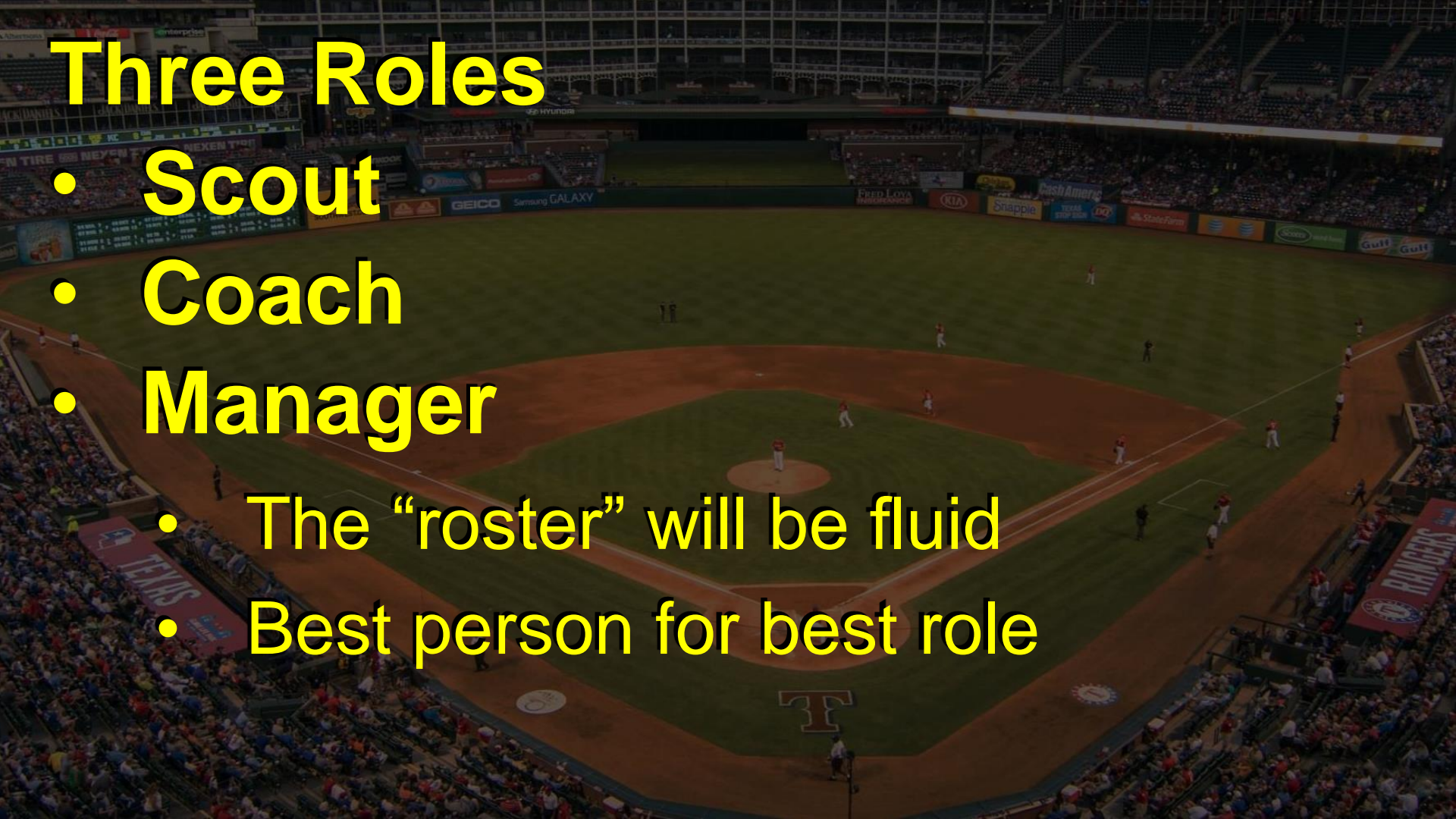
Three Roles

- Scout
- Coach
- Manager
- The “roster” will be fluid



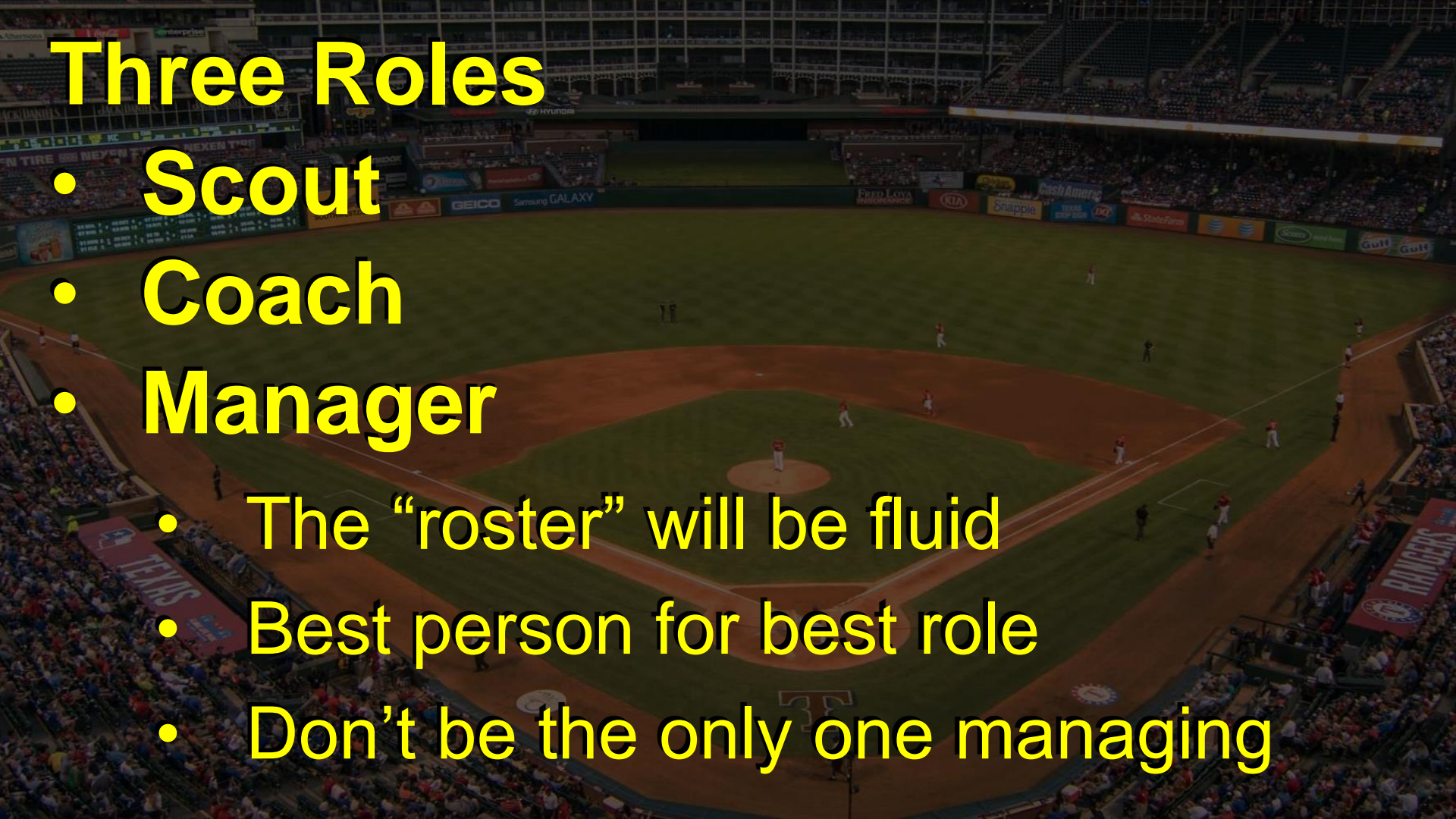
Three Roles

- Scout
- Coach
- Manager
 - The “roster” will be fluid
 - Best person for best role



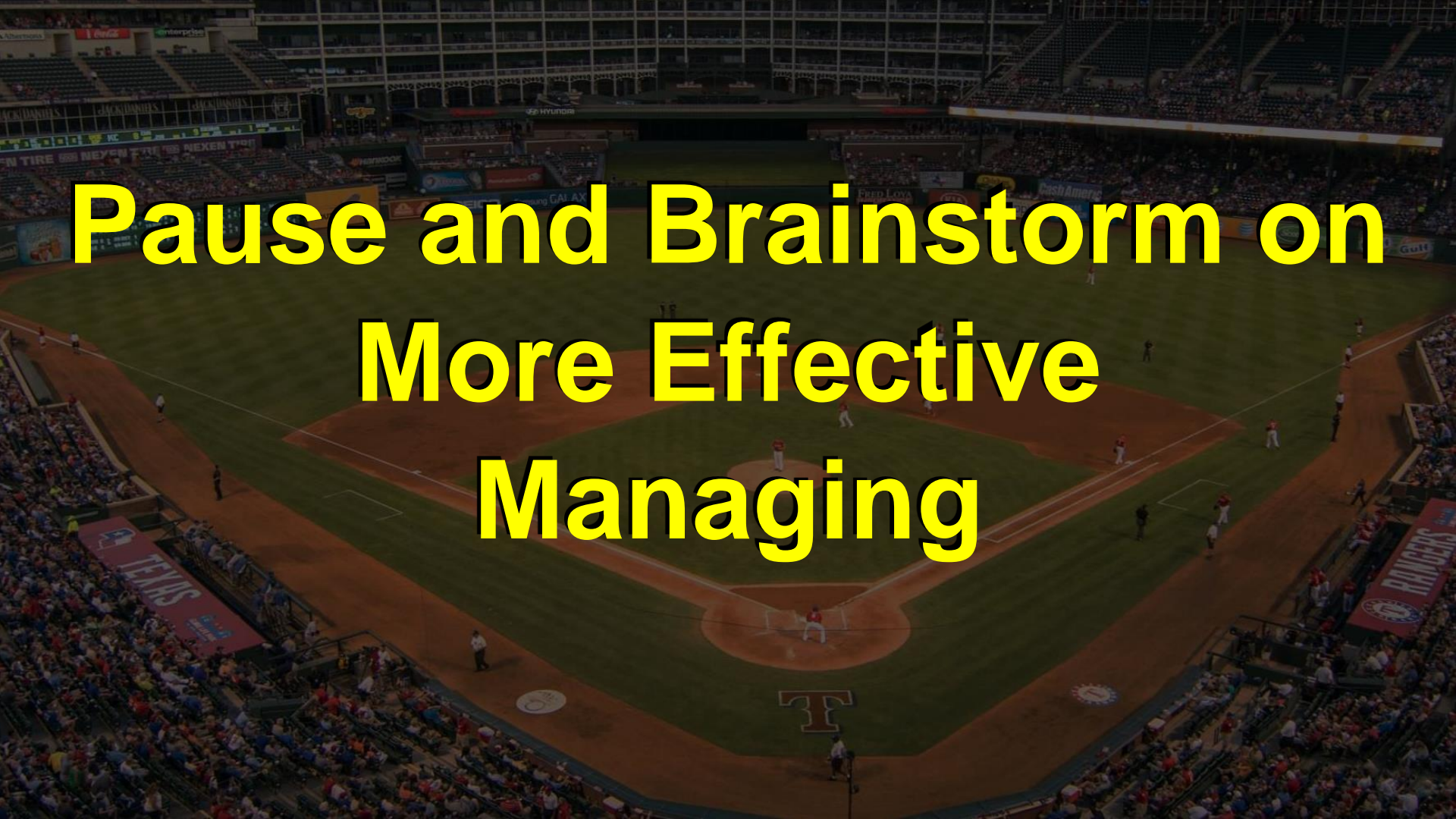
Three Roles

- Scout
- Coach
- Manager
 - The “roster” will be fluid
 - Best person for best role
 - Don't be the only one managing

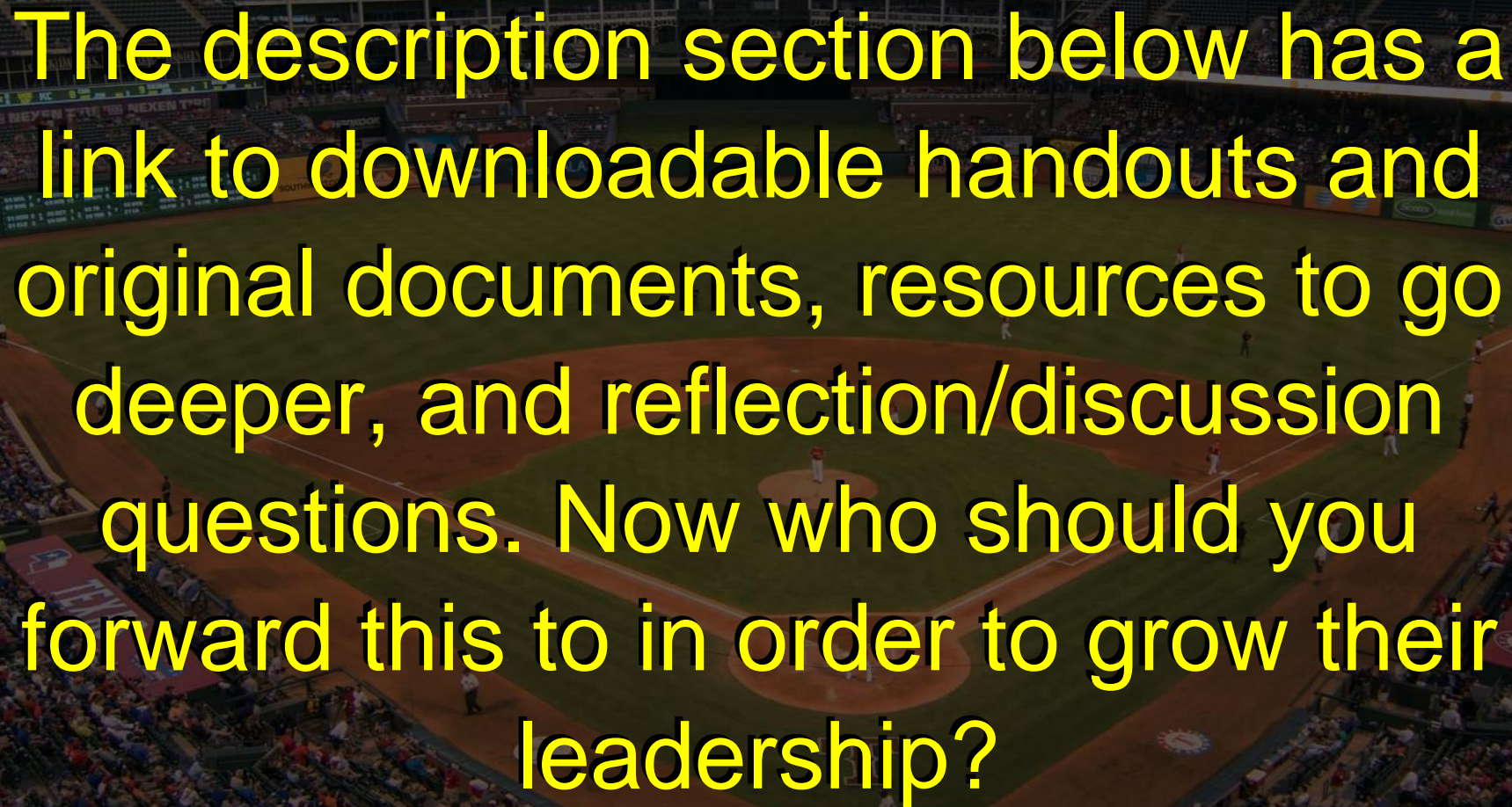


Managing Suggestions:

- Mentoring and job Shadowing
- Create opportunities for people to step back
- Allow ministries to gracefully end
- Learn to gracefully “cut” a player
- Have written responsibilities

An aerial view of a baseball stadium during a game. The field is green with brown dirt base paths. A large 'T' logo is visible on the grass near home plate. The stands are filled with spectators. The text 'Pause and Brainstorm on More Effective Managing' is overlaid in large yellow letters.

Pause and Brainstorm on More Effective Managing

An aerial view of a baseball stadium during a game. The field is visible with its green grass and brown dirt base paths. The stands are filled with spectators. The text is overlaid in the center of the image.

The description section below has a link to downloadable handouts and original documents, resources to go deeper, and reflection/discussion questions. Now who should you forward this to in order to grow their leadership?